



LOCATION

A prominent 5-star landmark strategically located in the heart of the city's banking, commercial and vibrant shopping district, Berjaya Times Square Hotel, Kuala Lumpur is conveniently linked and is easily accessible by various modes of road transportation directly from Kuala Lumpur International Airport (KLIA).

ACCOMMODATION

5-star • 600 rooms and suites • air-conditioning • bath tub • cable TV • IDD telephone • in-room Wi-Fi access • safe deposit box • mini bar • coffee and tea facilities • hairdryer • iron and ironing board • non-smoking floors

ROOM CATEGORIES

Room Category	Room Size
Studio	51m ²
Superior	57m ²
2-Bedroom Deluxe	99m ²
Premier	51 - 57m ²

Room Category	Room Size
2-Bedroom Suite	99m ²
Club Premier	51 - 57m ²
Club Premier Suite	99m ²

Club Premier guests will enjoy additional Club Premier privileges

HOTEL FACILITIES & SERVICES

fully-equipped business centre • courier and mail services • foreign currency exchange • major credit cards accepted • Wi-Fi access in public areas • laundry service • car rental and limousine services • 24-hour concierge • 24-hour room service • 24-hour security and CCTV surveillance

RESTAURANTS & BARS

Big Apple Restaurant: serving international and local cuisine
Samplings On The Fourteenth Restaurant: fine-dining restaurant serving exclusive classic Western cuisine

Broadway Lounge: serving cocktail drinks with live band performances
Poolside Gazebo: serving assorted beverages and snacks by the poolside

MEETING FACILITIES

pillar-less Manhattan Ballroom (up to 2,000 persons) • 15 function rooms (7 rooms come with natural daylight including Junior Manhattan Ballroom) • all function rooms are located on the 14th floor

RECREATION

gymnasium • rooftop swimming pool • steam & sauna • Vita Spa • squash courts • kid's playground

BERJAYA TIMES SQUARE SHOPPING MALL

9-screen cineplex • 12 levels of leisure, entertainment, and shopping • 14 major rides at Berjaya Times Square Theme Park • 48-lane bowling alley centre • 65 cafés, bistros, restaurants, and fast food outlets • 900 retail outlets • 4,500 car park bays

TRANSPORTATION

By Car	Duration
From Kuala Lumpur International Airport (KLIA), 75km	45 minutes
From Sultan Abdul Aziz Shah Airport (Skypark Terminal, Subang)	30 minutes

By Monorail	Duration
To KL Sentral, 4km	6 minutes
From KL Sentral to Kuala Lumpur International Airport (KLIA) via the ERL Express Rail	28 minutes

BERJAYA TIMES SQUARE HOTEL, KUALA LUMPUR - MALAYSIA

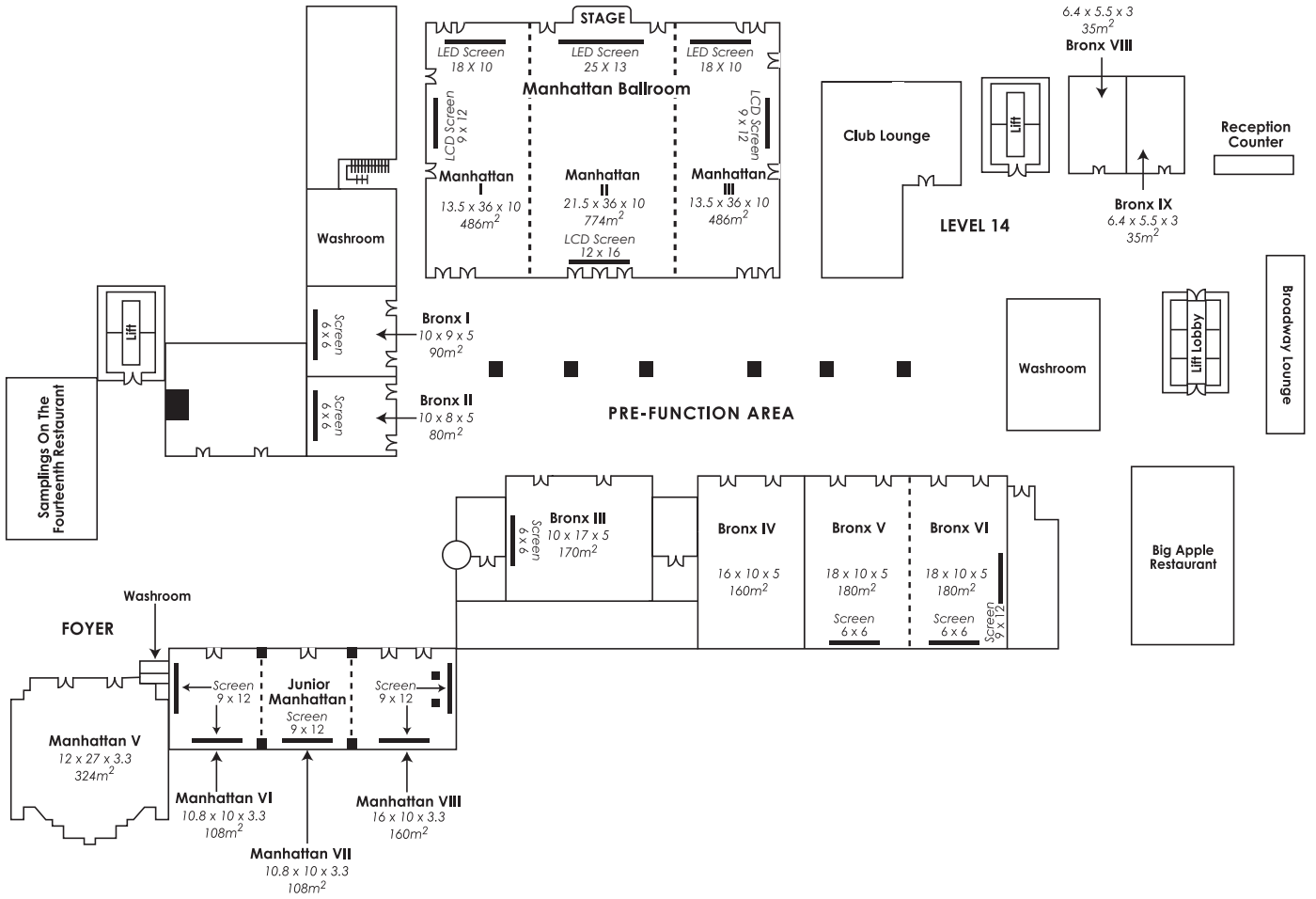
managed by Berjaya Hotels & Resorts (BHR), a division of Berjaya Land Berhad (201765-A)
 1 Jalan Imbi, 55100 Kuala Lumpur, Malaysia
 ☎ + 60 (3) 2117 8000 ☎ + 60 (3) 2143 3352 ✉ bth.rsvn@berjayahotel.com

www.berjayahotel.com



FLOOR PLAN

BERJAYA TIMES SQUARE HOTEL, LEVEL 14



MEETINGS & EVENTS SPACE

ROOM	DIMENSION Length x Width x Height(m)	SEATING CAPACITY								
		U-SHAPE	CLASSROOM	THEATRE	COCKTAIL	BOARDROOM	BUFFET	HOLLOW SQ.	ROUND TABLE W/O STAGE	ROUND TABLE WITH STAGE
Manhattan Ballroom	48.5 x 36 x 10	130	1,056	2,000	1,200	200	800	180	1,400	1,200
Manhattan I	13.5 x 36 x 10	72	240	500	250	80	200	84	360	210
Manhattan II	21.5 x 36 x 10	84	432	1,000	400	120	400	120	550	380
Manhattan III	13.5 x 36 x 10	72	240	500	250	80	200	84	360	210
Manhattan V	12 x 27 x 3.3	48	124	350	200	66	150	66	300	180
Junior Manhattan	37.6 x 10 x 3.3	94	150	300	-	84	-	80	300	220
Manhattan VI	10.8 x 10 x 3.3	27	45	100	-	22	-	30	90	60
Manhattan VII	10.8 x 10 x 3.3	27	45	100	-	22	-	30	90	60
Manhattan VIII	16 x 10 x 3.3	40	60	100	-	40	-	40	120	100
Bronx I	10 x 9 x 5	18	36	72	25	24	40	30	50	-
Bronx II	10 x 8 x 5	18	36	72	25	24	40	30	50	-
Bronx III	10 x 17 x 5	36	81	156	50	48	60	48	70	-
Bronx IV	16 x 10 x 5	36	45	110	40	42	70	42	100	-
Bronx V	18 x 10 x 5	39	84	176	70	48	100	48	100	-
Bronx VI	18 x 10 x 5	39	84	176	70	48	100	48	100	-
Bronx V / VI	18 x 20 x 5	-	180	350	150	-	200	-	200	-
Bronx VIII	6.4 x 5.5 x 3	15	18	32	20	15	20	18	30	-
Bronx IX	9.5 x 12.5 x 2.6	15	18	32	20	15	20	18	30	-
Foyer Area		-	-	-	1,200	-	-	-	-	-